

ATTRACTIVE
MAJESTIC
POWERFUL

ATUL
RIK



**STYLISH & SPORTY
TWIN HEADLIGHTS**



**BEST IN SEGMENT
MUSIC SYSTEM**



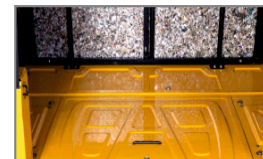
**ATTRACTIVE & MAJESTIC
BEIGE DASHBOARD**



**USB PORT FOR
CHARGING ON-THE-GO**



**TRENDY & BRIGHT
LED TAIL LIGHTS**



**BEST-IN-CLASS
LUGGAGE SPACE**



**IMPROVED AIR-CIRCULATION
SUPER COOLING BLUE ENGINE**



TECHNICAL SPECIFICATIONS

ENGINE	
TYPE	SINGLE CYLINDER, 4 STROKE - AIR COOLED
DISPLACEMENT	198.6 cc
MAX. POWER	8.60 kW (11.5 hp) @ 5750 + 250 rpm
MAX. TORQUE	15.8 Nm 3000 + 250 rpm
FUEL CONSUMPTION	27±3 KM/L*
TRANSMISSION	
CLUTCH TYPE	MULTI-PLATE WET TYPE
GEAR BOX	CONSTANT MESH
NUMBER OF GEARS	4 FORWARD & 1 REVERSE
SUSPENSION	
FRONT	HELICAL COMPRESSION SPRING & SHOCK ABSORBER
REAR	HELICAL COMPRESSION SPRING & SHOCK ABSORBER
STEERING	
TYPE	HANDLE BAR
BRAKE & TYRE	
BRAKE TYPE	DRUM TYPE, DUAL CIRCUIT HYDRAULIC FRONT & REAR WITH TMC
TYRE	4.00-8-4 PR
ELECTRICAL SYSTEM	
SYSTEM VOLTAGE	12V
BATTERY RATING	35 Ah
DIMENSIONS	
WHEELBASE	1950 mm
OVERALL WIDTH	1420 mm
OVERALL LENGTH	2765 mm
OVERALL HEIGHT	1800 mm
MINIMUM GROUND CLEARANCE	185 mm
SEATING CAPACITY	3 PASSENGER + 1 DRIVER
WEIGHTS	
GVW	700 kg
KERB WEIGHT	380 kg
FUEL TANK CAPACITY	PETROL: 10 Litre

Note: Pictures shown in this chart, technical specifications, accessories and equipment may appear, which are not part of the standard fitment. Atul Auto reserves the right to modify the technical specifications and features without prior notice.



SPACIOUS & COMFORTABLE
DRIVER & PASSENGER AREA
WITH AMPLE LEG ROOM



ADVANCED & POWERFUL
ENGINE 8.60 kW (11.5 hp)
WITH BLOWER TYPE FAN



EASY & COMFORTABLE
TWO-WAY ACCESS TO
THE ENGINE



ANTI-DIVE TELESCOPIC
FRONT & REAR
SUSPENSION



STYLE



STRENGTH



SPACE



SAFETY



SAVINGS

COLOUR OPTIONS

Yellow Blue Red Black Green



ATUL AUTO LIMITED

Marketing Head Office: 406, Baleshwar Square,
Opp. Iscon Mall, S.G. Highway, Ahmedabad - 380015, Gujarat - India.

• Phone: +91-2827-235531

• Customer Care: 89888 70999 • Email: atulconnect@atulauto.co.in

www.atulauto.co.in atulautold atulautold @globalatulauto

Authorised Distributor

** Terms & Conditions Apply