



LET YOUR
GEM
SPARKLE

ATUL //
GEM
DIESEL

PASSENGER 3+1





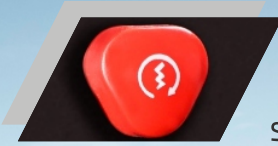
MULTI FOCAL HEAD LAMP WITH HALOGEN BULB



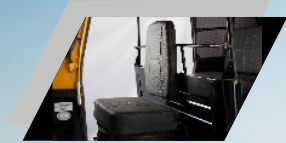
CHARGE ON GO



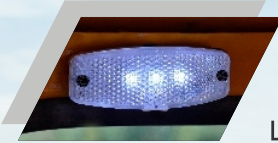
SMART CONSOLE CLUSTER



SINGLE TOUCH START



COMFORT SEATING FOR DRIVER



LED CABIN LAMP



DELUX SEATING FOR PASSENGER



STRONG HOOD FRAME & PREMIUM SOFT TOP



Specification	GEM Paxx
Engine	436 CC Four Stroke, Air Cooled Single Cylinder DI
Max. Power	BS III :- 5.52 KW @ 3600+/- 300 RPM BS IV :- 6 KW @ 3600+/- 300 RPM
Max. Torque	19.2 Nm @2400+/- 300 RPM 21 Nm @2400+/- 300 RPM
Fuel Tank capacity	10.5+/- 0.5 ltr
Transmission	Constant mess, 4 Forward & 1 reverse Wet, Multi Plat
Suspension	
Front	Helical Compression Spring and Damper, Hydraulic Double Acting
Rear	Helical Compression Spring Rubber Spring and Damper, Hydraulic Double Acting
Chassis	Monocoque Pressed Section
Electrical system	12 V 45 Ah Multi Plate Lead Acid
Dimension	
Wheel base	1925 mm
L X B X H	1450 X 2930 X 1830 mm
Turning Radius	2.5 m
Ground clearance	160 mm
Seating capacity	Driver + 3 Passenger
Gross vehicle weight	995 Kg
Kerb weight	BS III :- 420 kg BS IV :- 434 kg
Tyre	4.5 - 10-8PR



ATUL AUTO LIMITED

Marketing Head Office: 406, Baleswar Square, Opp. Iscon Mall, S.G. Highway, Ahmedabad - 380015, Gujarat - India.

• Phone: +91-2827-235531 • Email: info@atulauto.co.in

www.atulauto.co.in [atulautold](https://www.facebook.com/atulautold) [atulautold](https://www.instagram.com/atulautold) [@globalatulauto](https://www.youtube.com/@globalatulauto)

Authorised Dealer: